

# LBL-COB-384-24V-10MM-IP65

## COB LED Strip 24V 3W/ft 16ft Waterproof IP65

Project:

Location:

Cat # :

Qty:

Notes:

### DESCRIPTION

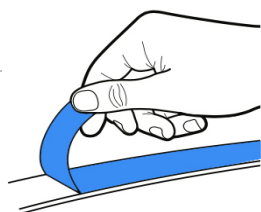
Waterproof COB LED flexible strip 24V  
Seamless linear light - no diffused cover needed  
No hotspots and with CRI 90+ for vibrant colors  
Higher efficiency and more flexible than SMD LED strips  
Easy to install and low maintenance  
Double sided adhesive 3M tape and wires on both ends

### APPLICATIONS

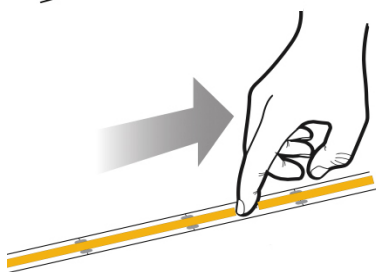
Cove and decorative lighting, path and contour marking  
Outdoor, undercabinet and valance use

### INSTALLATION INSTRUCTIONS

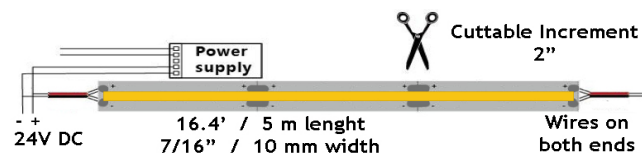
1. Remove backing paper to reveal adhesive tape



2. Press LED tape firmly onto clean smooth surface that adsorbs heat, such as metal or glass. Start at one end and gradually move along surface, making sure tape is smooth and not creased



3. Cut on trim marks



### WARNING

LED tape gets hot. Mounting firmly and securely on smooth and thermo conductive surface such as metal or glass is critical for proper thermal management and long life.  
Not following these instructions voids the warranty

### ORDERING GUIDE

3000K LBL-COB-384-24V-10MM-30K-IP65  
5000K LBL-COB-384-24V-10MM-50K-IP65

### SPECIFICATION (tolerance +/- 10%)

Applications	Undercabinet, Cove, Valance, Decorative
Color Temperature (K)	3000   5000
Power	3 W/ft
Efficiency	100 lm/W
Light output	300 lm/ft
Length per roll	16.4 ft / 5 meters
Maximum Length	16.4 ft / 5 meters
Width	7/16" / 10 mm
Power per Max Length	50 W
Lumen per Max Length	5,000 lm
Beam Angle	180°
CRI	90 +
Input	24V DC
Dimmable	Yes
LED Operation Type	Constant Voltage
IP Grade	IP 65
Approved Location	Outdoor / Wet Location
Ambient Temperature	-4°F (-20°C) to +104°F (+40°C)
Cuttible Increment	2"
Adhesive Tape Type	3M 300SE
Projected Life	70% Light Output at 20,000 Hours
Certification	cETLus
Warranty	3 Year

### ACCESSORIES

Sold Separately



cULus Class 2 Drivers 60W, 96W, 192W, 288W  
120V-277V in, 24V DC out. **5-in-1 Dimmable**  
Built-In Wiring Compartments. Wet location



cULus Class 2 Driver 30W or 96W  
120V in, 24V DC out. Triac / 0-10V Dimmable(96W)



Strip Connector 8mm no wires cat # LSC-0



Single Connector with 6" wire cat # LSC-1



Two Connectors with 6" wire cat # LSC-2

Note: Connectors are not waterproof.